

SLEI SDN. BHD.

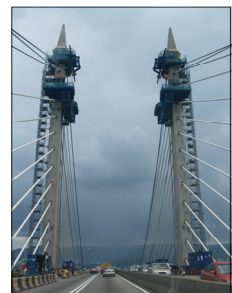
COMPANY PROFILE

2018

**COMMITMENT AND STRATEGIC
PARTNERSHIPS FOR TOTAL
BUSINESS EXCELLENCE**



1. INTRODUCTION	PAGE 1 — 2
2. FACTORY FACILITIES	PAGE 3 — 6
3. CNC MACHINING CENTRE	PAGE 7 — 14
4. QUALITY ASSURANCE	PAGE 15
5. OUR CAPABILITIES	PAGE 16
6. TRACK RECORDS	PAGE 17 — 22
7. PHOTOGRAPHS OF MAJOR PROJECTS	PAGE 23 — 104





FACTORY 1



FACTORY 2

SLEI SDN. BHD.

was incorporated in 2001 with its business activities revolving around fabrication of heavy steel structures and installation projects. The Company specializes in the design and fabrication of all types of steel structures, form travelers, steel launchers, steel mould fabrication such as M-Mould, I-Mould, Calvert-Mould, Parapet Mould, Slipper-Mould, Segmental Mould and guard rails, etc. All these steel fabrication works are for the construction of infrastructure projects such as highways, elevated roads, fly-over, and bridges. The Company's main customers are the pre-stressing contractors and civil contractors involved in these infrastructure projects.

The Company has also ventured into fabrication of steel structures for concrete batching plants and palm oil mills, piping works for land reclamation projects and mining equipment.

In order to supply the products on time to the customers satisfaction and stringent standards, the company has implemented its Quality Policy and Procedures in all levels of the fabrication process. The Company believes that in order to maintain high standards, it has to improve continuously all aspects of quality control. To this end, the Company has a dedicated technical team well versed in Autocad techniques to provide design and accurate drawings for shop fabrication.

The Company has also placed its utmost importance on safety in the factory and at work sites during erection. All employees are trained to practice safety procedures in their respective areas of works.

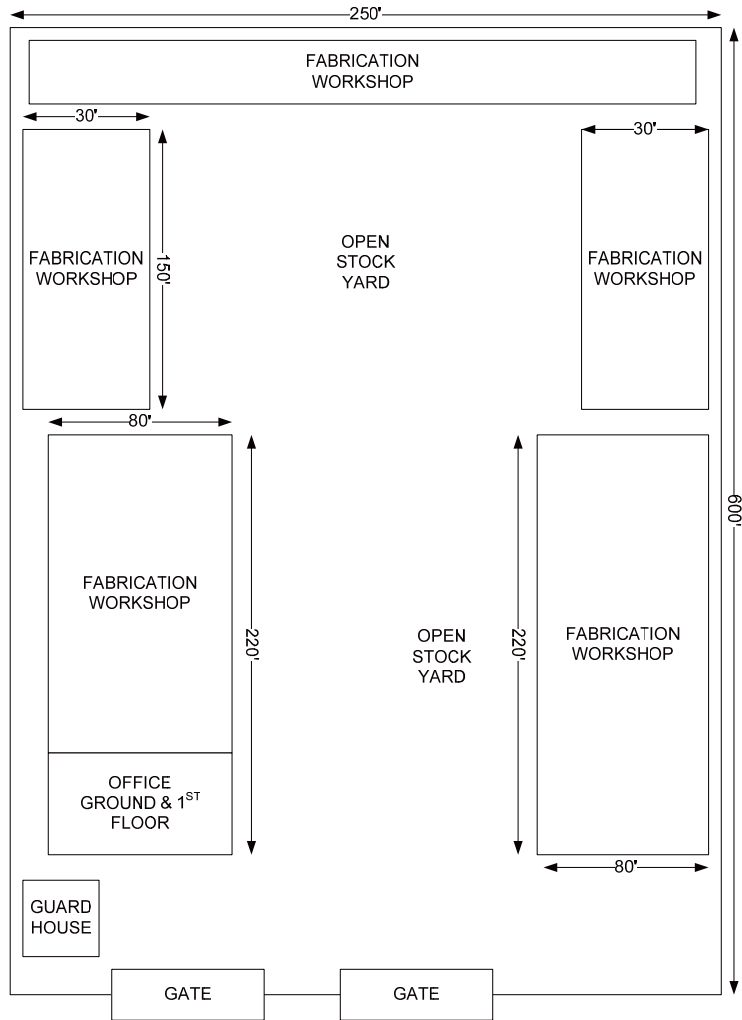


COOPERATE INFORMATION

- NAME OF COMPANY : SLEI SDN. BHD.
- COMPANY ADDRESS : No. Plot 83, Jln Johan 1/2, Kawasan Perindustrian Pengkalan 31550 Pusing Perak Darul Rizuan
- DATE INCORPORATED : 10TH AUGUST 2001
- COMPANY ACTIVITIES : Steel Fabrication and Erection
- AUTHORISED CAPITAL : RM 1,000,000.00
- PAID-UP CAPITAL : RM 500,000.00
- BOARD OF DIRECTORS : Mr. Lim Loon Hock
Ms. Kok Mei Lin
- WORKSHOP : Factory 1
No. Plot 83, Jln Johan 1/2, Kawasan Perindustrian Pengkalan 31550 Pusing Perak Darul Rizuan
Factory 2

TRACK RECORDS : Please refer to brief summary of projects completed

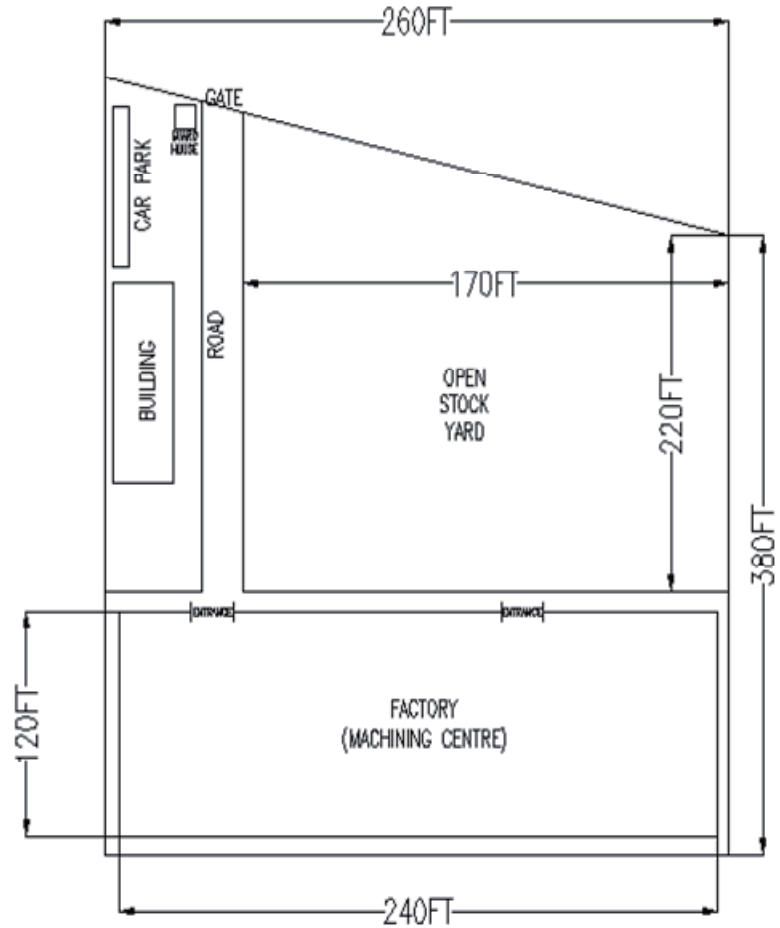




FACTORY 1 - FACILITIES

The factory is situated in a land area of approximately 150,000 sq.ft. with a built-up area of approximately 100,000 sq.ft. for fabrication work and office.

The factory facilities includes an electric overhead traveling crane, shearing machines, bending machines, metal cutters, rolling machines, various welding and other auxiliary equipments.



FACTORY 2 - FACILITIES

The factory is situated in a land area of approximately 100,000 sq.ft. with a built-up area of approximately 30,000 sq.ft. for machining work and office.

The factory facilities includes an electric overhead traveling crane, CNC Machining Centre, CNC Lathe Machine, Precision Boring & Milling Machine and other Manual Machining Machine .

MACHINE & EQUIPMENT LIST

FACTORY 1

1. HACO PPM30150 PRESS BRAKE	-	1	UNIT
2. LVD PPBL 40/20 PRESS BRAKE	-	1	UNIT
3. 6MM X 8FTS SHEARING MACHINE (CHINA)	-	1	UNIT
4. HACO HSLX 3013 SHEARING MACHINE	-	1	UNIT
5. ROLLING MACHINE (LOCAL)	-	1	UNIT
6. PUNCHING MACHINE (CHINA)	-	1	UNIT
7. KINGSLAND 55XS IRON WORKER 65T	-	1	UNIT
8. HACO COMB 1220/8 NOTCHING M/C	-	1	UNIT
9. TIG WELDING (SANREX)	-	3	UNITS
10. INVERTER TIG WELDING (SANREX)	-	3	UNITS
11. MIG WELDING 500AMP & 350AMP (KEMPPT)	-	30	UNITS
12. INVERTER TIG STICK WELD	-	1	UNIT
13. PLASMA CUTTING M/C	-	4	UNITS
14. AIR COMPRESSOR 2 H.P	-	3	UNITS
15. AIR COMPRESSOR 7.5 H.P	-	2	UNITS
16. AIR COMPRESSOR 10 H.P	-	1	UNIT
17. WIM WELDING	-	10	UNITS
18. DRILLING MACHINE (ENGLAND)	-	1	UNIT
19. DRILLING MACHINE (CHINA)	-	5	UNITS
20. HOBART MIG (Co2) MACHINE 500AM	-	2	UNITS
21. HYDRAULIC JACK 150 TON	-	1	UNIT
22. JARMA PUNCHING MACHINE 200 TON	-	1	UNIT
23. SECTIONAL BENDING (ROUNDO - R4)	-	1	UNIT
24. WELDING SET 300AMP	-	15	UNITS
25. WELDING SET 500AMP	-	5	UNITS
26. 360MM KALTENBACH CIRCULAR BENDSAW	-	2	UNITS
27. HYDRAULIC JACK 60 TON	-	1	UNIT
28. HYDRAULIC JACK 30 TON	-	1	UNIT
29. EVERISING FULLY AUTOMATIC S-250HA	-	1	UNIT
30. COUGHING MACHINE 600 (DC)	-	4	UNITS
31. AUTO CUTTER	-	10	UNITS
32. JETBROACH MACHINE	-	3	UNITS
33. MAGNETIC DRILL	-	3	UNITS
34. FORKLIFT TOYOTA 3 TON	-	3	UNITS
35. FORKLIFT TOYOTA 6 TON	-	1	UNIT
36. OVERHEAD CRANE ABUS 10 TON	-	1	UNIT
37. OVERHEAD CRANE LIFTECH 10 TON	-	1	UNIT
38. OVERHEAD CRANE LIFTECH 3 TON	-	2	UNITS
39. OVERHEAD CRANE LIFTECH 5 TON	-	5	UNITS
40. OVERHEAD CRANE (OUTDOOR) LIFTECH 5 TONS	-	1	UNIT
41. ARGON MACHINE	-	1	UNIT
42. HACO 3HBR220 ROLLING MACHINE	-	1	UNIT
43. AKYAPAK APK-100 ROLLING MACHINE	-	1	UNIT
44. HACO ROLLING MACHINE	-	1	UNIT
41. KH 600 SEMI AUTO MIG WELDING MACHINE	-	1	UNIT
42. MACH AUTO CX500 MIG WELDING MACHINE	-	1	UNIT
43. MACH AUTO CX350 MIG WELDING MACHINE	-	2	UNITS
44. PLASMA CNC PROFILING CUTTING MACHINE	-	1	UNIT

FACTORY 2

1. CNC PRECISION BORING & MILLING CENTRE	-	1	UNIT
2. CNC VERTICAL TURRET LATHE MACHINE	-	1	UNIT
3. CNC DOUBLE COLUMN MACHINING CENTRE	-	2	UNITS
4. CNC LATHE SLANT BED MACHINE	-	6	UNITS
5. CNC VERTICAL MACHINING CENTRE	-	4	UNITS
6. MANUAL VERTICAL TUNING MACHINE	-	2	UNITS
7. MANUAL TURRET MILLING MACHINE	-	3	UNITS
8. MANUAL UNIVERSAL LATHE MACHINE	-	2	UNITS
9. AIR COMPRESSOR 50HP (SCREW TYPE)	-	1	UNIT
10. FORKLIFT TOYOTA 3 TON	-	1	UNIT
11. OVERHEAD CRANE 1 TON	-	1	UNIT
12. OVERHEAD CRANE 10 TON	-	1	UNIT
13. OVERHEAD CRANE LIFTECH 3 TON	-	1	UNIT
14. OVERHEAD CRANE LIFTECH 5 TON	-	2	UNITS



Plasma CNC Profiling Cutting Machine



500 tons Press Brake
Capacity : MS Plate Thickness 1mm ~ 12mm @ 3000mm LG



HACO HSLX 3013 Shearing Machine
Capacity : MS Plate Thickness 4.5mm ~ 10mm



360MM KALTENBACH CIRCULAR BENDSAW
(DEGREE TYPE)



Haco Rolling Machine
Capacity : MS Plate Thickness 1mm ~ 20mm



HACO 3HBR220 Rolling Machine
Capacity : MS Plate Thickness 1mm ~ 12mm



Komatsu Plasma CNC Profiling Cutting machine
Size 2000mm X 6000mm
Capacity : Mild Steel 50mm thk / Stainless Steel 30mm thk



Akyapak APK-100

I MACHINING CENTRE FACTORY PHOTOS I

SLEI SDN. BHD. establish a Sourcing Centre for machining parts from 8 meters in length to small parts and this is inline with growing global sourcing needs which cater for company which in need of such service.



I PRECISION BORING & MILLING I

MACHINE MODEL : PBM-135A/B
 WORKING SURFACE : 1400X1600
 MAX TABLE LOAD : 7 TONS
 TRAVEL X AXIS : 3000mm
 TRAVEL Y AXIS : 2000mm
 TRAVEL Z AXIS : 1500mm

ADVANTAGE
 Boring center accuracy : 0.02mm
 Positioning accuracy : within 0.01mm
 Inner hole surface roughness : 3.2um
 Table rotation position accuracy : +/-15"
 Repeatability : +/-8"



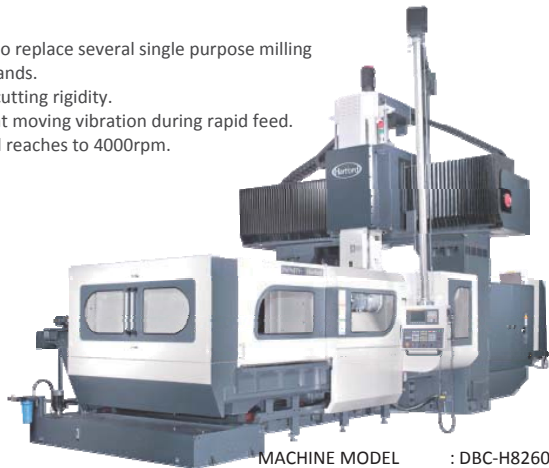
MACHINE MODEL : REXER-20
 WORKING SURFACE : DIA 2000mm
 MAX TABLE LOAD : 8 TONS
 MAX TURNING DIA : DIA 2500mm
 MAX TURNING HEIGHT : 698.5mm
 TRAVEL X AXIS : 1555mm



I MULTI-SURFACE DOUBLE COLUMN MACHING CENTER I

ADVANTAGE

- With Multiple function B/C axis milling head to replace several single purpose milling head,achieving multipurpose machining demands.
- Z-axis employs 4 linear guide ways, increase cutting rigidity.
- Center support on Y axis ballscrews to prevent moving vibration during rapid feed.
- Oil mist cooling on BC head,the spindle speed reaches to 4000rpm.



MACHINE MODEL : DBC-H8260H
 WORKING SURFACE : 8000X2040
 MAX TABLE LOAD : 18 TONS
 TRAVEL X AXIS : 8050mm
 TRAVEL Y AXIS : 3400mm
 TRAVEL Z AXIS : 1000mm



Machine Arbor Accessories



MACHINE MODEL : PRO-2150
 WORKING SURFACE : 4100X1450
 MAX TABLE LOAD : 7 TONS
 TRAVEL X AXIS : 2060mm
 TRAVEL Y AXIS : 1560mm
 TRAVEL Z AXIS : 780mm

ADVANTAGE

- Heavy cutting Double Column Machining Center – Box Guide Way
- Heavy Cutting (at one time) Dia. 76mm, 100mm drilling depth
- 6,000rpm Std.
- 10,000 rpm DDS



I CNC LATHE SLANT BED I



MACHINE MODEL : SMEC PL 60 LM
 TURNING CAPACITY : DIA 800mm
 TURNING LENGTH : 3200mm
 X AXIS STROKE : 470mm
 Z AXIS STROKE : 3270mm



MACHINE MODEL : SMEC PL 45 L
 TURNING CAPACITY : DIA 690mm
 TURNING LENGTH : 2255mm
 X AXIS STROKE : 350mm
 Z AXIS STROKE : 2330mm



MACHINE MODEL : SMEC PL 15
 TURNING CAPACITY : DIA 300mm
 TURNING LENGTH : 300mm
 X AXIS STROKE : 180mm
 Z AXIS STROKE : 330mm



MACHINE MODEL : SMEC PL 25L
 TURNING CAPACITY : DIA 380mm
 TURNING LENGTH : 1030mm
 X AXIS STROKE : 220mm
 Z AXIS STROKE : 1090mm



MACHINE MODEL : SMEC LCV 50 XLB
 TURNING CAPACITY : DIA 550mm
 TURNING LENGTH : 4600mm
 X AXIS STROKE : 4000mm
 Y AXIS STROKE : 510mm
 Z AXIS STROKE : 550mm



I VERTICAL MACHINING CENTER I

MACHINE MODEL : F1 LG-1000
 WORKING SURFACE : 1150X510
 MAX TABLE LOAD : 0.7 TONS
 TRAVEL X AXIS : 1000mm
 TRAVEL Y AXIS : 510mm
 TRAVEL Z AXIS : 630mm



ADVANTAGE

Vertical Machining Center with Linear Guide Way
 High Efficiency/High Speed VMC.
 Increase Machining Quality with less Machining Time.



ADVANTAGE

Vertical Machining Center with Box Guide Way
 Heavy Cutting Machining center. Y axis 4 guide way designed.
 8000 rpm gear ZF direct drive option.
 10,000 rpm DDS option.



MACHINE MODEL : HCMC-1892
 WORKING SURFACE : 1950X920
 MAX TABLE LOAD : 3 TONS
 TRAVEL X AXIS : 1800mm
 TRAVEL Y AXIS : 920mm
 TRAVEL Z AXIS : 820mm



I MANUAL MACHINING CENTRE I



Vertical Tuning Machine



Turret Milling Machine



Universal Lathe Machine



I Machining Finish Product I



QUALITY ASSURANCE



Coating Thickness Check.



QUALITY is a primary objective in SLEI. Stringent quality controls are exercised throughout the fabrication & welding process. All critical dimensions are regularly gauged and checked out by our Quality Assurance Personnel. Like Visual Inspection, Coating Thickness Check, Dye Penetration (In-house), UT—Test & MPI (Third Party).

By Using this approach, our respective customers can remain confident that we are omitted to provide them with exactly what they are required. Every of our delivery shall be a recommendation for our continued or future business.



Visual Inspection & Dimension Check.



UT Test In Progress on Butt Weld.



Dye Penetration Test in Progress On Fillet Weld.



Magnetic Particle Inspection (MPI) Test In Progress on Fillet Weld.



OUR CAPABILITIES



Piping



MS Tank



Bucket Elevator

Specialize in the fabrication and installation of the following steel structures for the construction of bridges, fly-over, elevated roads, etc

- M-Mould, I-Mould, Calvert Mould, Parapet Mould, U- Mould
- Form Travellers
- Steel Launchers
- Roof Trusses
- Galvanized Hand Rail (Mild Steel and Cast Iron)
- Mild Steel Casing Pipe
- Steel Fabricator (Mild Steel and Stainless Steel)
- Precision Machined Steel Components
- Palm Oil Industry Equipment / Fiber Production Line



Anti Vandalism Tube



Steel Truss



Spiral Staircase



Parapet Steel Mould



Column Steel Mould



De-stressing Device



Steel Platform



Segment Lifter



Segmental Mould

TRACK RECORDS

COMPLETED PROJECT			
TRACK RECORDS			
ITEM	CLIENTS	YEAR	BRIEF DESCRIPTION
1	JEKS ENGINEERING	2001	Contract Sum : RM 457,517.36 Scope : Lekir Bulk Terminal - Concrete Sleepers Steel Mould.
2	LEIGHTON CONTRACTORS (MALAYSIA) SDN. BHD.	2001	Contract Sum : RM 207,672.00 Scope : Fabrication of Piles Shoe & Delivery to PPI Factory.
3	IJM CONSTRUCTION SDN. BHD.	2001	Contract Sum : RM 130,420.00 Scope : Supply, fabrication & delivery of Concrete Column Steel Mould.
4	BALLAST NEDAM GROUP N.V (MALAYSIA) SDN. BHD.	2002	Contract Sum : RM 1,037,917.99 Scope : Fabrication of Steel Mould for Precast Concrete Elements.
5	GAMUDA BERHAD	2002	Contract Sum : RM 993,937.50 Scope : K.L. Western Traffic Dispersal Scheme (Package C) - Metal Railing (Hot-dip Galv.)
6	ROAD BUILDER (M) SDN. BHD.	2002	Contract Sum : RM 232,000.00 Scope : New Pantai Highway - Steel Mould for Precast Segment Crosshead for Bridge
7	VSL ENGINEERS (M) SDN. BHD.	2002	Contract Sum : RM 1,420,020.19 Scope : Travelling Formwork - Sg. Pahang Chenor Bridge.
8	GAMUDA BERHAD	2002	Contract Sum : RM 521,334.90 Scope : Supply & Delivery of M.S. Grating.
9	ROAD BUILDER (M) SDN. BHD.	2002	Contract Sum : RM 538,510.00 Scope : New Pantai Highway - Modification and fabrication of Segmental Steel Mould.
10	VSL SINGAPORE PTE. LTD.	2003	Contract Sum : RM 114,587.44 Scope : Metro Line 4, Santiago De Chile - Fabrication of ULRs Frame & Crane Wheels.
11	VSL HONG KONG LIMITED	2003	Contract Sum : RM 127,135.58 Scope : Supply & fabrication of crane wheels for Deep Bay Link.
12	VSL ENGINEERS (M) SDN. BHD.	2003	Contract Sum : RM 820,039.86 Scope : Fabrication and erection of Launching Nose - Bridge Over Batang Kemena,
13	HASRAT SEDAYA SDN. BHD.	2003	Contract Sum : RM 542,909.51 Scope : Travelling Formwork - Bridge Over Tasik Raban, Lenggong, Perak.
14	VSL ENGINEERS (M) SDN. BHD.	2003	Contract Sum : RM 416,680.29 Scope : Supply, fabrication & delivery of Launching Truss - Jalan Gopeng, Ipoh.
15	VSL ENGINEERS (M) SDN. BHD.	2003	Contract Sum : RM 226,816.60 Scope : Supply, fabrication & delivery of Ramp Temporary Props - Bayan Baru, Penang.
16	PROJALMA CONSTRUCTION SDN. BHD.	2003	Contract Sum : RM 327,027.76 Scope : Supply, fabrication & delivery of Segment Lifter - Jalan Gopeng, Ipoh.
17	CONCRETE EMPIRE SDN. BHD.	2003	Contract Sum : RM 181,596.00 Scope : Modification of U11 Prestressed Concrete Beam Steel Mould to Post - Ten-
18	VSL ENGINEERS (M) SDN. BHD.	2003	Contract Sum : RM 648,800.00 Scope : Fabrication, delivery & commissioning 2 pairs of Form Traveller - Kuala Kurau Bridge, Perak.
19	SERIBONG - KOMBINA - HAZAMA CONSORTIUM	2003 /2004	Contract Sum : RM 766,706.00 Scope : Supply, fabricate & erection cement / flyash silos, conveyor and monitoring
20	LEIGHTON CONTRACTORS (M) SDN. BHD.	2004	Contract Sum : RM 261,100.00 Scope : Supply & fabrication of Column Steel Mould - Putrajaya Highway, KL.
21	FREYSSINET - APTO JOINT VENTURE	2004	Contract Sum : RM 972,000.00 Scope : Fabrication Segment Carriage & Segment Spreader Beam - Bridge Over Sg. Prai,
22	HASRAT SEDAYA SDN. BHD.	2004	Contract Sum : RM 260,000.00 Scope : Modification & Additional Works for Formwork Traveller - Bridge Over Tasik Raban, Lenggong, Perak.

COMPLETED PROJECT			
TRACK RECORDS			
ITEM	CLIENTS	YEAR	BRIEF DESCRIPTION
23	PROJALMA SDN. BHD.	2004	Contract Sum : RM 8,000.00 Scope : Supply & fabrication Segmental Steel Mould - NKVE Link, Jalan Meru Inter-
24	PROJALMA SDN. BHD.	2004	Contract Sum : RM 6,556.00 Scope : Supply & fabrication Segmental Steel Mould - Setia Alam Interchange and Toll Plaza.
25	VSL ENGINEERS (M) SDN. BHD.	2004	Contract Sum : RM 440,000.00 Scope : Supply & fabrication Temporary Props - NKVE and EMKAY Interchange.
26	MUDAJAYA CONSTRUCTION	2004	Contract Sum : RM 3,610.00 Scope : Supply & fabrication Beam Steel Mould.
27	PROJALMA SDN. BHD.	2004	Contract Sum : RM 120,000.00 Scope : Supply & fabrication Segmental Steel Mould - Sprint Western KL Dispersal / Interchange.
28	G.W. ENGINEERING SDN. BHD.	2004	Contract Sum : RM 82,000.00 Scope : Supply & fabrication RE Wall Steel Mould
29	PROJALMA SDN. BHD.	2004	Contract Sum : RM 4,000.00 Scope : Supply & fabrication Segmental Steel Mould - Middle Ring Road, Seremban.
30	ROAD BUILDER (M) SDN. BHD.	2004	Contract Sum : RM 40,000.00 Scope : Supply & fabrication Column Steel Mould - Jalan Balakong, Lebuhraya Sg. Besi.
31	MMC - GAMUDA JOINT VENTURE	2005	Contract Sum : RM 136,000.00 Scope : Supply & fabrication Parapet Steel Mould - S.M.A.R.T Project , KL
32	FREYSSINET - APTO JOINT VENTURE	2005	Contract Sum : RM 297,000.00 Scope : Supply & fabrication Cable Stay Antivandalism Tube and Cable Clamps for Penang Bridge Maintenance.
33	VSL ENGINEERS (M) SDN. BHD.	2005	Contract Sum : RM 113,000.00 Scope : Supply & fabrication Temporary Props - Middle Ring Road, Seremban.
34	VSL ENGINEERS (M) SDN. BHD.	2005	Contract Sum : RM 175,000.00 Scope : Supply & fabrication Temporary Props and Shear Blocks - NKVE Link, Jalan Meru Interchange.
35	MUDAJAYA CONSTRUCTION	2005	Contract Sum : RM 62,000.00 Scope : Modification works - I-Beam Steel Mould
36	VSL ENGINEERS (M) SDN. BHD.	2005	Contract Sum : RM 71,000.00 Scope : Supply & fabrication Shear Block & Bearing Plates - Middle Ring Road, Serem-
37	IRAMA DUTA SDN. BHD.	2005	Contract Sum : RM 120,000.00 Scope : Supply & Fabrication Structural Steel Works - Sg. Buloh Toll Plaza.
38	MMC - GAMUDA JOINT VENTURE	2005	Contract Sum : RM 450,000.00 Scope : Fabrication Structural Steel Works - S.M.A.R.T. Project, KL.
39	VSL ENGINEERS (M) SDN. BHD.	2005	Contract Sum : RM 292,000.00 Scope : Supply & fabrication Segment Lifter - Middle Ring Road, Seremban.
40	PROJALMA SDN. BHD.	2005 /2006	Contract Sum : RM 1,000,000.00 Scope : Supply & fabrication Segmental Steel Mould & Accessories - Subang Kelana Link Project.
41	PROJALMA SDN. BHD.	2006	Contract Sum : RM 150,000.00 Scope : Supply & fabrication Segmental Steel Mould - Interchange / Thomson Road / Lornie Road, Singapore.
42	STRETCHMARKS ASIA SDN. BHD.	2006	Contract Sum : RM 114,000.00 Scope : Supply, fabrication & Erection Climbing Structure - Extreme Park, Shah Alam.
43	VSL SINGAPORE PTE. LTD.	2006	Contract Sum : RM 160,000.00 Scope : Supply, fabrication Lifting Structure & Permanent Pylon Structure - Bridge to Keppel Island, Singapore.
44	FREYSSINET PSC - FREYSSINET APTO JOINT VENTURE	2006	Contract Sum : RM 1,028,000.00 Scope : Supply & fabrication New Part for Dubai Special Gantry and Modification of Existing Gantry.
45	VSL ENGINEERS (M) SDN. BHD.	2006 /2009	Contract Sum : RM 594,000.00 Scope : Supply & fabrication Working Platform & Steel Structure for Subang Kelana Link Project.

TRACK RECORDS

COMPLETED PROJECT			
TRACK RECORDS			
ITEM	CLIENTS	YEAR	BRIEF DESCRIPTION
46	STRETCHMARKS ASIA SDN. BHD.	2007	Contract Sum : RM 270,000.00 Scope : Supply, fabrication & erection Climbing Steel Structure - Challenge Park, Putrajaya
47	MAXCOM ENGINEERING SDN. BHD.	2007	Contract Sum : RM 110,000.00 Scope : Supply, fabrication & erection HCL Bunker for Infineon Technologies (Kulim) Sdn. Bhd.
48	FREYSSINET PSC - FREYSSINET APTO JOINT VENTURE	2007	Contract Sum : RM 1,378,000.00 Scope : Supply & fabrication Steel Structure & Accessories - Penang Bridge Replacement
49	FREYSSINET PSC - FREYSSINET APTO JOINT VENTURE	2007 /2008	Contract Sum : RM 300,000.00 Scope : Supply & fabrication Pylon Lifting Structure - Penang Bridge Replacement Stay.
50	FREYSSINET PSC - FREYSSINET APTO JOINT VENTURE	2007 /2008	Contract Sum : RM 380,000.00 Scope : Supply & fabrication Pylon Working Platform - Penang Bridge Replacement Stay.
51	GAMUDA BERHAD (BAHRAIN)	2007 /2008	Contract Sum : RM 3,350,000.00 Scope : Supply & fabrication Wing Formwork - The Replacement of Sitra Bridge, Bahrain
52	PROJALMA SDN. BHD.	2007 /2008	Contract Sum : RM 670,000.00 Scope : Supply & fabrication Segmental Steel Mould - Dewan Bahasa Hang Tuah Project ,
53	PROJALMA SDN. BHD.	2007 /2008	Contract Sum : RM 1,155,000.00 Scope : Supply & fabrication Segmental Steel Mould - Gerbang Selatan Bersepaduan Project, Johor.
54	PROJALMA SDN. BHD.	2007 /2008	Contract Sum : RM 537,000.00 Scope : Supply & fabrication Segmental Steel Mould - Middle Ring Road Fasa 2 Project, Seremban.
55	VSL ENGINEERS (M) SDN. BHD.	2007 /2008	Contract Sum : RM 370,000.00 Scope : Supply & fabrication Steel Structure - Gerbang Selatan Bersepaduan Project, Johor.
56	VSL ENGINEERS (M) SDN. BHD.	2007 /2008	Contract Sum : RM 1,325,000.00 Scope : Supply & fabrication Segment Lifter & Steel Structure - Dewan Bahasa Hang Tuah
57	VSL ENGINEERS (M) SDN. BHD.	2007 /2008	Contract Sum : RM 650,000.00 Scope : Supply & fabrication Steel Structure - Middle Ring Road Fasa 2 Project, Seremban.
58	VSL ENGINEERS (M) SDN. BHD.	2007 /2009	Contract Sum : RM 1,160,000.00 Scope : Supply & fabrication Inner Diaphragm & Steel works - Sg Johor Bridge
59	VSL SINGAPORE PTE. LTD.	2008	Contract Sum : RM 196,000.00 Scope : Supply & fabrication Steel Structure - Extension of Bartley Road to Airport Road, Singapore.
60	SIM LEISURE CONSULTANTS SDN. BHD.	2008	Contract Sum : RM 215,000.00 Scope : Supply, fabrication & erection Steel Water Play Structure (Hot-Dip Galv.) - Sunway lagoon, KL
61	STRIKER CRUSHING & SCREENING SDN. BHD.	2008	Contract Sum : RM 144,500.00 Scope : Supply, fabrication & erection Crane Rail and Steel Structure at SCS Ware House.
62	STRIKER CRUSHING & SCREENING SDN. BHD.	2008	Contract Sum : RM 1,164,399.00 Scope : Supply, fabrication & delivery 1112 Chassis, Impactor Body & Recycler kit. (Mobile
63	STRIKER CRUSHING & SCREENING SDN. BHD.	2008	Contract Sum : RM 815,622.00 Scope : Supply, fabrication & delivery 15M, 18M & 24M Radial Stacker.
64	LINATEX RUBBER PRODUCTS SDN. BHD.	2008	Contract Sum : RM 440,000.00 Scope : Supply, fabrication & delivery Genesis Cyclone & MISC Parts.
65	LINATEX RUBBER PRODUCTS SDN. BHD.	2008	Contract Sum : RM 34,400.00 Scope : Supply, fabrication & delivery Various Sizes Impeller Parts
66	LINATEX RUBBER PRODUCTS SDN. BHD.	2008	Contract Sum : RM 758,500.00 Scope : Supply, fabrication & delivery Various Sizes Grinding Disc
67	LINATEX RUBBER PRODUCTS SDN. BHD.	2008	Contract Sum : RM 928,400.00 Scope : Supply, fabrication & delivery Various Sizes Vibration Screen.
68	STRETCHMARKS ASIA SDN. BHD.	2009	Contract Sum : RM 40,000.00 Scope : Supply & fabrication Climbing Steel Structure - 360 Mall, Kuwait

COMPLETED PROJECT			
TRACK RECORDS			
ITEM	CLIENTS	YEAR	BRIEF DESCRIPTION
69	STRETCHMARKS ASIA SDN. BHD.	2009	Contract Sum : RM 20,000.00 Scope : Supply & fabrication Climbing Steel Structure - Outward Bound, Lumut, Perak.
70	STRETCHMARKS ASIA SDN. BHD.	2009	Contract Sum : RM 6,000.00 Scope : Supply & fabrication Skate Park Obstacles - Challenge Park, Putrajaya.
71	GAMUDA BERHAD (BAHRAIN)	2009	Contract Sum : RM 550,000.00 Scope : Supply & fabrication Additional Wing Formwork - The Replacement of Sitra Bridge, Bahrain
72	PROJALMA SDN. BHD.	2009	Contract Sum : RM 455,000.00 Scope : Supply & fabrication Segmental Steel Mould - Gerbang Selatan Bersepaduan - Mid Term Link, Johor.
73	SIM LEISURE CONSULTANTS SDN. BHD.	2009	Contract Sum : RM 102,000.00 Scope : Supply & fabrication Steel Structure - Universal Studio Singapore.
74	MDC PRECAST INDUSTRIES SDN. BHD.	2009	Contract Sum : RM 400,000.00 Scope : Supply & fabrication UM Mould, T Mould & M Mould.
75	MDC PRECAST INDUSTRIES SDN. BHD.	2009	Contract Sum : RM 300,000.00 Scope : Supply & fabrication Reaction Beam.
76	VSL ENGINEERS (M) SDN. BHD.	2008 /2009	Contract Sum : RM 1,160,000.00 Scope : Supply & fabrication Inner Diaphragm & Steel works - Sg Johor Bridge.
77	STRIKER CRUSHING & SCREENING SDN. BHD.	2009	Contract Sum : RM 1,018,197.00 Scope : Supply, fabrication & delivery 1112 Chassis, Impactor Body & Recycler kit. (Mobile Crusher)
78	STRIKER CRUSHING & SCREENING SDN. BHD.	2009	Contract Sum : RM 568,139.00 Scope : Supply, fabrication & delivery 12M,18M,20M,24M & 30M Radial Stacker.
79	LINATEX RUBBER PRODUCTS SDN. BHD.	2009	Contract Sum : RM 357,544.00 Scope : Supply, fabrication & delivery Genesis Cyclone & MISC Parts.
80	LINATEX RUBBER PRODUCTS SDN. BHD.	2009	Contract Sum : RM 998,400.00 Scope : Supply, fabrication & delivery Various Sizes Impeller Parts & Various Sizes Grinding Disc.
81	LINATEX RUBBER PRODUCTS SDN. BHD.	2009	Contract Sum : RM 109,000.00 Scope : Supply, fabrication & delivery Various Sizes Vibration Screen & Various Size Pinch Valve.
82	SIM LEISURE CONSULTANTS SDN. BHD.	2010	Contract Sum : RM 150,000.00 Scope : Supply, fabrication & Steel parts & Structural works for Universal Studio, Singa-
83	SINAR SELASEH SDN. BHD.	2010	Contract Sum : RM 2,200,000.00 Scope : Supply, fabrication & erection of ware house steel structure. - Ikea Handel Sdn. Bhd.
84	AHMAD ZAKI SDN. BHD.	2010	Contract Sum : RM 390,000.00 Scope : Supply, fabrication & erection of segmental steel mould at Persys Sdn. Bhd. Batang Kali Casting Yard.
85	PERSYS SDN. BHD.	2010	Contract Sum : RM 98,000.00 Scope : Supply, fabrication & delivery of pier wing formwork - Jalan Duta Project.
86	FREYSSINET INTERNATIONAL & CIE	2010	Contract Sum : RM 1,544,000.00 Scope : Supply, fabrication & delivery Steel Structure, Stadium BC PLACE, Canada.
87	STRIKER CRUSHING & SCREENING SDN. BHD.	2010	Contract Sum : RM 3,400,000.00 Scope : Supply, fabrication & delivery Radial Stacker, 1112 Chassis, Impactor Body, Recy- cler kit and spare parts.
88	LINATEX RUBBER PRODUCTS SDN. BHD.	2010	Contract Sum : RM 2,500,000.00 Scope : Supply, fabrication & delivery Vibration Screen, Pinch Valve, Grinding Disc, Gene- sis Cyclone and Misc parts.
89	VSL ENGINEERS (M) SDN. BHD.	2010 /2011	Contract Sum : RM 3,500,000.00 Scope : Supply, fabrication, delivery & installation of 8 sets Formwork Traveller, Coastal Highway Johor to Nusajaya, Johor.
90	SYNN PALM OIL SDN. BHD.	2010 /2011	Contract Sum : RM 3,000,000.00 Scope : Supply, fabrication & erection fiber plant equipment, conveyor and structural works.

TRACK RECORDS

COMPLETED PROJECT

TRACK RECORDS

ITEM	CLIENTS	YEAR	BRIEF DESCRIPTION
91	PROJALMA SDN. BHD.	2011	Contract Sum : RM 1,800,000.00 Scope : Supply, fabrication & delivery segmental steel mould . Ded Ruas Jln Layang Antasari, Indonesia.
92	KAYANGAN KEMAS SDN. BHD.	2011	Contract Sum : RM 2,400,000.00 Scope : Supply, fabrication & erection of ware house steel structure. - Deauto Sdn. Bhd.
93	ADVENTURE ROPE SDN. BHD.	2011	Contract Sum : RM 55,000.00 Scope : Supply, fabrication & delivery Steel Support and Componenets for assembly children play ground.
94	FREYSSINET INETRATIONAL & CIE	2011	Contract Sum : RM 150,214.00 Scope : Supply and fabrication Guide Tube for Portmann , Canada Project.
95	FREYSSINET INETRATIONAL & CIE	2011	Contract Sum : RM 120,000.00 Scope : Supply and fabrication Guide Tube for Goldern Horn, Russia Project.
96	PROJALMA SDN. BHD.	2011	Contract Sum : RM 750,000.00 Scope : Supply, fabrication & delivery segmental steel mould for LRT Kelana Jaya Line Extension Project, Kuala Lumpur.
97	VSL INDIA PVT LTD	2011	Contract Sum : RM 900,000.00 Scope : Supply, fabrication & delivery segmental steel mould for Ganga Bridge, India.
98	MSA INTERNATIONAL SDN. BHD.	2011	Contract Sum : RM 180,000.00 Scope : Supply and fabrication Shakeour Lump breaker and Sand Cooler Classifier.
99	ARAN INTERNATIONAL SDN. BHD.	2011	Contract Sum : RM 150,000.00 Scope : Supply and fabrication Steel parts for the Kittilia Paste Plant.
100	ARAN INTERNATIONAL SDN. BHD.	2011	Contract Sum : RM 80,000.00 Scope : Supply and fabrication Steel parts for the Las Mercedes Mine.
101	STRIKER CRUSHING & SCREENING SDN. BHD.	2011	Contract Sum : RM 739,000.00 Scope : Supply, fabrication & delivery Radiar Stacker, 1112 Chassis, Impactor Body, Recycler kit and spare parts.
102	LINATEX RUBBER PRODUCTS SDN. BHD.	2011	Contract Sum : RM 890,000.00 Scope : Supply, fabrication & delivery Vibration Screen, Pinch Valve, Grinding Disc, Genesis Cylone and Misc parts.
103	VSL ENGINEERS (M) SDN. BHD.	2012	Contract Sum : RM 3,200,000.00 Scope : Fabricate, delivery and commissioning of 4 pairs of Formwork Traveller.
104	VSL ENGINEERS (M) SDN. BHD.	2012	Contract Sum : RM 1,600,000.00 Scope : Fabricate and deliver Steel Structures and Steel Component.
105	FREYSSINET INETRATIONAL & CIE	2012	Contract Sum : RM 873,000.00 Scope : Fabricate, delivery temporary steel structure for BC PLACE STATIUM, CANADA.
106	FREYSSINET INETRATIONAL & CIE	2012	Contract Sum : RM 153,000.00 Scope : Supply, fabrication & delivery Cable Bridge Hardware, PORTMAN BRIDGE, CANADA.
107	FREYSSINET INETRATIONAL & CIE	2012	Contract Sum : RM 122,000.00 Scope : Supply, fabrication & delivery Cable Bridge Hardware, GOLDEN HORN BRIDGE, RUSSIA.
108	EASTERN PRETECH (MALAYSIA) SDN. BHD.	2012	Contract Sum : RM 1,220,000.00 Scope : Supply, fabrication, delivery and commisioning 4 sets segmental steel mould for KLANG VALLEY MRT PROJECT.
109	UNTANG JAYA SDN. BHD.	2012	Contract Sum : RM 1,897,000.00 Scope : Supply, fabrication & delivery 3 sets 1 - Girder Steel Bridge, Kapit, Sarawak.
110	FREYSSINET INETRATIONAL & CIE	2012 /2013	Contract Sum : RM 3,070,000.00 Scope : Supply, fabrication & delivery Bridge Steel Structure for Wing Tip Bridge, West Virginia, USA.
111	FREYSSINET INETRATIONAL & CIE	2012 /2013	Contract Sum : RM 2,770,000.00 Scope : Refurbish Gantry Main Elements and Fabricate Steel Structures and Steel Component, Project : DAMMAN
112	VSL ENGINEERS (M) SDN. BHD.	2012 /2013	Contract Sum : RM 16,800,000.00 Scope : Supply, fabricate and delivery VSL Gantry. (6 units) (GANTRY - VG1 ~ VG6)
113	DEAUTO INDUSTRIES SDN. BHD.	2013	Contract Sum : RM 120,000.00 Scope : Supply, fabricate and delivery 3 units concrete mixer drum and body chassis
114	STRIKER THEMING & LEISURE SDN. BHD.	2013	Contract Sum : RM 220,000.00 Scope : Supply, fabricate and delivery steel structure. Project : Legoland Water Park
115	PROJALMA SDN. BHD.	2013	Contract Sum : RM 375,000.00 Scope : Supply, fabricate and delivery 2 sets special crossing segmental steel mould. Project : VEHICULAR BRIDGE ACROSS BUKIT PANJANG ROAD, SINGAPORE
116	PROJALMA SDN. BHD.	2013	Contract Sum : RM 280,000.00 Scope : Supply, fabricate and delivery 2 sets special crossing segmental steel mould. Project : A56 - PUNGGOL EAST, SINGAPORE

COMPLETED PROJECT

TRACK RECORDS

ITEM	CLIENTS	YEAR	BRIEF DESCRIPTION
117	ENG LEE ENGINEERING PTE. LTD.	2013	Contract Sum : RM 158,000.00 Scope : Supply, fabricate and delivery column steel mould. Project : MRT Tuas Extension, Contract 1688, Singapore
118	VSL SINGAPORE PTE. LTD.	2013	Contract Sum : RM 280,000.00 Scope : Supply, fabricate and delivery lifting structure. Project : Pedestrian Bridge at Marina Bay.
119	VSL SINGAPORE PTE. LTD.	2013	Contract Sum : RM 75,000.00 Scope : Supply, fabricate and delivery lifting structure. Project : Ardmore Park Condominium, Singapore
120	PROJALMA SDN. BHD.	2013	Contract Sum : RM 53,000.00 Scope : Supply, fabricate and delivery 1 set pier mould . Project : Marina Bay Pedestrian Bridge, Singapore
121	VSL ENGINEERS (M) SDN. BHD.	2013 /2014	Contract Sum : RM 5,600,000.00 Scope : Supply, fabricate and delivery VSL Gantry. (6 units) (GANTRY - VG7 ~ VG8)
122	VSL SINGAPORE PTE. LTD.	2013 /2014	Contract Sum : RM 620,000.00 Scope : Supply, fabricate and delivery lifting structure, platform & etc.
123	STRETCHMARKS ASIA SDN. BHD.	2014	Contract Sum : RM 155,000.00 Scope : Supply, fabricate and delivery steel structure for District 21, IOI City Mall, Putrajaya.
124	ADVENTURE ROPES SDN BHD	2014	Contract Sum : RM 150,000.00 Scope : Supply, fabricate and delivery walkway structure & ballustrade for Desa Park City.
125	ADVENTURE ROPES SDN BHD	2014	Contract Sum : RM 62,000.00 Scope : Supply, fabricate and delivery steel structure for District 21, IOI City Mall, Putrajaya.
126	ADVENTURE ROPES SDN BHD	2014 /2015	Contract Sum : RM 150,000.00 Scope : Supply, fabricate and delivery steel platform, Commonwealth Park
127	VSL ENGINEERS (M) SDN. BHD.	2014	Contract Sum : RM 1,725,000.00 Scope : Supply, fabricate and delivery Form Traveller for MRT V8 package.
128	VSL ENGINEERS (M) SDN. BHD.	2014	Contract Sum : RM 840,000.00 Scope : Supply, fabricate and delivery Steel Sturture for MRT V1 - Unslung Gantry.
129	STRIKER THEMING & LEISURE SDN. BHD.	2014	Contract Sum : RM 70,000.00 Scope : Supply, fabricate and delivery steel structure. Project : Sg. Karang Resort.
130	STRIKER THEMING & LEISURE SDN. BHD.	2014	Contract Sum : RM 55,000.00 Scope : Supply, fabricate and delivery steel structure. Project : Bukit Merak Water Park.
131	VSL ENGINEERS (M) SDN. BHD.	2014	Contract Sum : RM 450,000.00 Scope : Supply, fabricate and delivery Form Traveller for Subang SkyPark Project
132	IKHMAS JAYA SDN. BHD.	2014 /2015	Contract Sum : RM 1,500,000.00 Scope : Supply, fabricate, modification and delivery 6 pair Form Traveller for Subang SkyPark Project.
133	Kumpulan Edora Setia Sdn. Bhd.	2015	Contract Sum : RM 1,300,000.00 Scope : Supply, fabricate and delivery Steel Facede for bridge at Tmn Metropolitan, KL.

COMPLETED PROJECT PHOTOS



Air Slide - In house fabrication and site installation



In house fabrication of Blow Pod for Dense Phase Conveyor System

CEMENT & FLYASH SILOS | CONVEYING SYSTEM |

Project : Greater Ipoh Water Supply Scheme II Construction of Sg. Kinta Dam
 Client : **SERIBONG-KONBINA-HAZAMA CONSORTIUM**
 Scope of work : Fabrication and erection 100 tons, 200 tons silos and conveyor system such as Air Slide, Screw Conveyor and Dense Phase System



Pneumatic parts & Electrical device for the dense phase system.



View of Sg. Kinta Dam



Discharge Hopper



Inlet piping of the silos



Air slide system



Screw Conveyor - Site installation



COMPLETED PROJECT PHOTOS



Inner Core Form



Rebar Jig



Wing Form & Support



Trolley, Inner Core temporary stock yard.

Site Trial Assembly Wing form & Inner core form.

PRECAST SEGMENTAL STEEL MOULD

Project : SUBANG KELANA LINK (SKL) FLY-OVER
 Client : **PROJALMA SDN. BHD.**
 Scope of work : Fabrication precast segment steel mould such as Bulkhead, Wing Form, Inner Core, Trolley, Structure Support and Accessories



In-house fabrication Wing Form Support and Inner Core Form



Loading 20 meter length Bulkhead at our ware house

COMPLETED PROJECT PHOTOS

I PRECAST SEGMENTAL STEEL MOULD I

Project : Interchange at Braddell Road / Thomson Road / Lornie Road, Singapore
 Client : **PROJALMA SDN. BHD.**
 Scope of work : Fabrication precast segment steel mould such as Bulkhead, Wing Form, Inner Core and Accessories.
 Modification works for Inner Core Arm, Wing Form Support and Bulkhead Support.



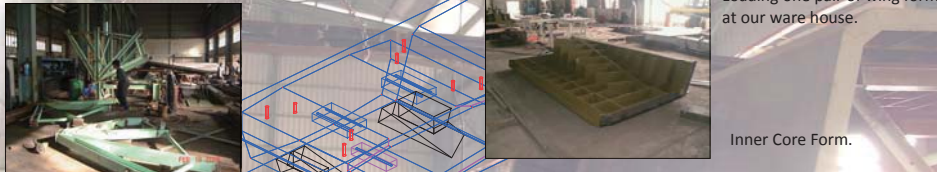
Bulkhead in-house fabrication and trial assembly with wing form.



Fit up Inner Core Arm and Wing Form.



Loading one pair of wing form at our ware house.



Inner Core Form.



Inner Core Web Convert Attachment and Recess Box.



Steel Form Work.



Form work Misc Steel Parts



Launching Nose



Project : Bridge Over Batang Kemena, Bintulu Sarawak
 Client : **VSL ENGINEERS (M) SDN. BHD.**
 Scope of work : Fabrication Steel Form Work and repair existing Launching Nose.

I INCREMENTALLY LAUNCHING METHOD (ILM) FORMWORK I

COMPLETED PROJECT PHOTOS



Site Erection



Project : Seremban Fly Over
 Client : **VSL ENGINEERS (M) SDN. BHD.**
 Scope of work : Fabrication Segment Lifter and Accessories

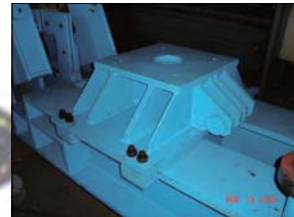
SEGMENT LIFTER



Segment Lifter.



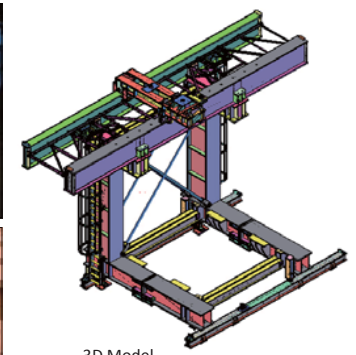
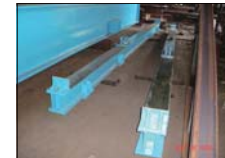
SLU Sledge Parts c/w machining roller.



In house Fitting & welding works in progress.



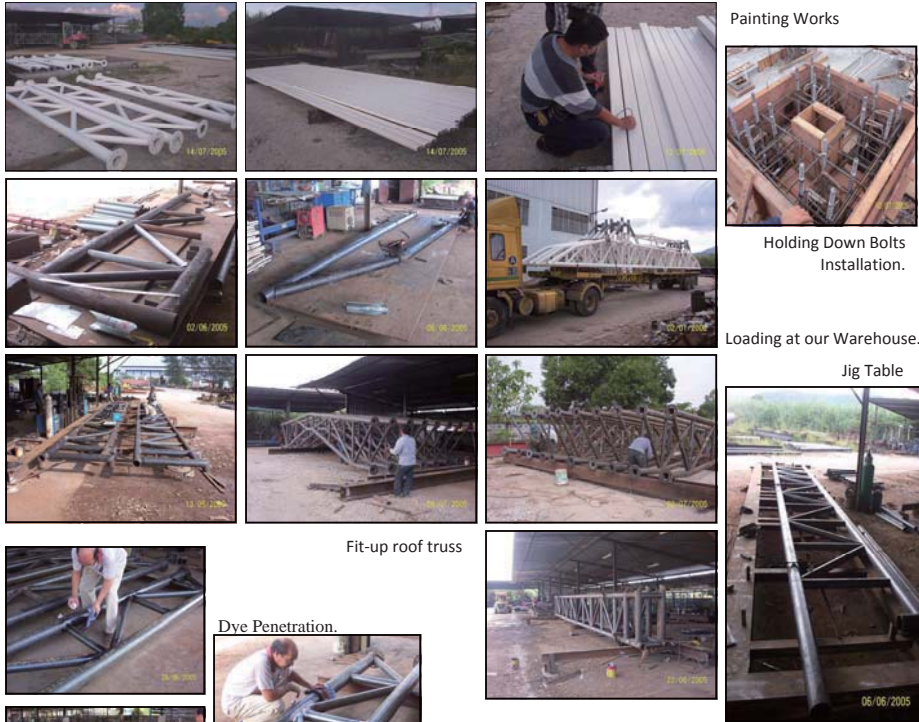
Machining Components.



3D Model.



COMPLETED PROJECT PHOTOS



Painting Works



Holding Down Bolts Installation.

Loading at our Warehouse.

Jig Table



Fit-up roof truss

Dye Penetration.



STEEL ROOF TRUSS

Project : SUNGAI BULOH TOL PLAZA
 Client : **IRAMA DUTA SDN. BHD.**
 Scope of work : Fabrication and erection of steel roof truss of Highway Toll Plaza.



TOLL PLAZA STEEL STRUCTURE AND PEDESTRIAN BRIDGE

Project : STORMWATER MANAGEMENT AND ROAD TUNNEL (S.M.A.R.T.)
 Client : **M.M.C. — GAMUDA JOINT VENTURE**
 Scope of work : Fabrication and erection of Toll Plaza Steel Structure and Pedestrian Bridge.



Holding Down Bolt Installation.



Buggy Lane Canopy.



Spiral Staircase.



Pedestrian Bridge



Arc Canopy.

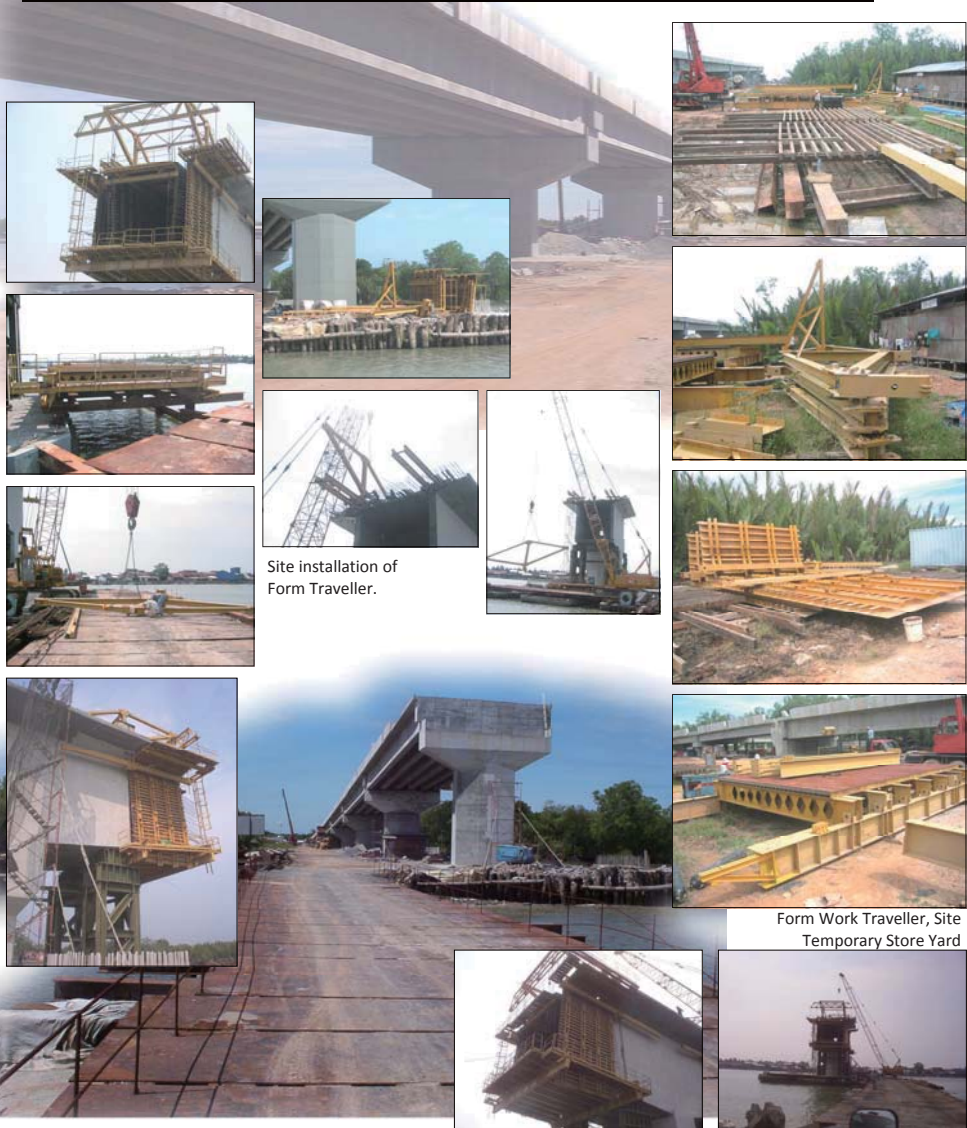


Spiral Staircase.

COMPLETED PROJECT PHOTOS

I FORM TRAVELLER I

Project : Kuala Kurau Bridge, Krian District Perak
 Client : **VSL ENGINEERS (M) SDN. BHD.**
 Scope of work : Fabrication, delivery and commissioning two pairs of Form Work Traveller.



Site installation of Form Traveller.

Form Work Traveller, Site Temporary Store Yard



Project : Bridge Over Tasik Raban. Lenggong, Perak
 Client : **HASRAT SEDAYA SDN. BHD.**
 Scope of work : Fabrication and Repair of Form work Traveller.

I FORM TRAVELLER I



COMPLETED PROJECT PHOTOS



Site Erection

| FORM TRAVELLER |

Project : Sg. Pahang Chenor Bridge
 Client : **VSL ENGINEERING (M) SDN. BHD.**
 Scope of work : Fabrication, Erection and Commissioning Form Traveller.



Fabrication in progress and Jig table.

Site Erection

| COLUMN STEEL MOULD |

Project : Kuala Lumpur, Putrajaya Highway
 Client : **LEIGHTON CONTRACTORS (M) SDN. BHD.**
 Scope of work : Fabrication & delivery of Column Steel Mould.

COMPLETED PROJECT PHOTOS

| ULRS FRAME & CRANE WHEELS |

Project : Metro Line 4, Santiago De Chile
 Client : **VSL SINGAPORE PTE LTD**
 Scope of work : Fabrication ULRS Steel Frame and Crane Wheels.



Antivandalism Tube

Project : Bridge Over Sg. Prai
 Client : **FREYSSINET—APTO JOINT VENTURE**
 Scope of work : Fabrication Segment Carriage, Rail Beam and Antivandalism Tube.

| SEGMENT CARRIAGE & RAIL BEAM |



New Rail

Segment Carriage

Fitting and welding in progress.

COMPLETED PROJECT PHOTOS

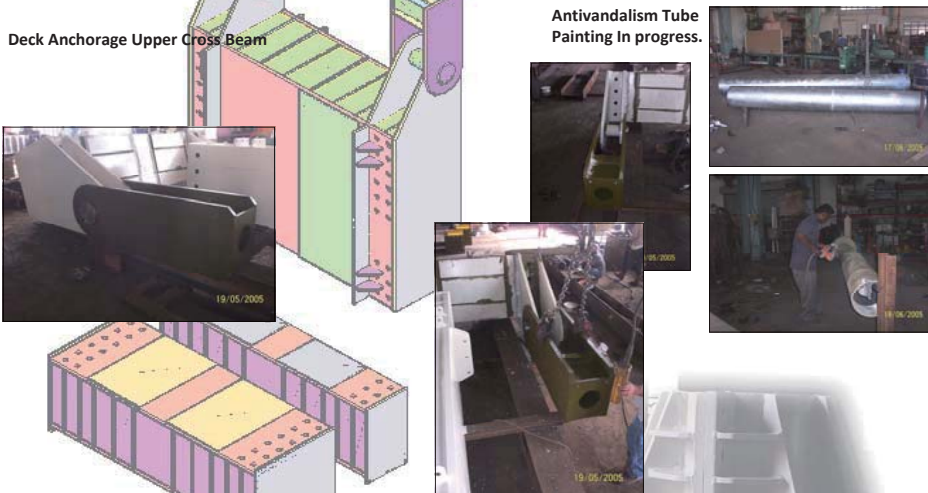
I DE - STRESSING DEVICE DECK ANCHORAGE UPPER CROSS BEAM I

Project : SW9 Stay Replacement, Penang Bridge
 Client : PSC - FREYSSINET - FREYSSINET APTO JOINT VENTURE
 Scope of work : Fabrication De - Stressing Device, Deck Anchorage Upper Cross Beam, Deck Lower Reaction Cross beam, Antivandalism Tube.



Deck Anchorage Upper Cross Beam

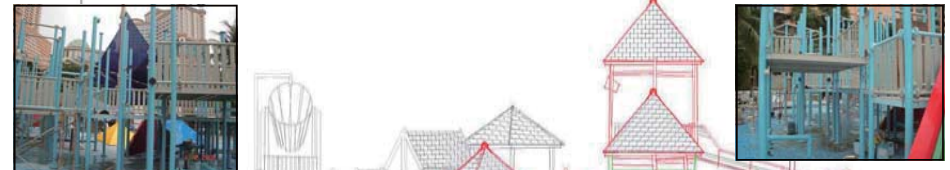
Antivandalism Tube
 Painting In progress.



De - Stressing Device



Project : Sunway Lagoon, Play Structure
 Client : **Sim Leisure Consultants Sdn. Bhd.**
 Scope of work : Fabrication and erection Mild Steel Play Structure and Installation Of Play Elements



I PLAY STRUCTURE I PLAY ELEMENTS I

COMPLETED PROJECT PHOTOS

I CLIMBING TOWER STEEL STRUCTURE I



In house fabrication.

Project : Shah Alam Extreme Park
 Client : **Stretchmark Asia Sdn. Bhd.**
 Scope of work : Fabrication and Erection of Climbing Steel Structure & Roofing.



Structure over view.



Site Erection.



Structure cover with Panel



Loading on trailer at warehouse.



Project : Bridge to Keppel Island, Singapore
 Client : **VSL Singapore Pte. Ltd.**
 Scope of work : Fabrication Segment Lifting System, Pylon & Guide Pipe.

I SEGMENT LIFTING SYSTEM I



COMPLETED PROJECT PHOTOS



Project : Dubai Special Gantry
 Client : **FREYSSINET—APTO JOINT VENTURE**
 Scope of work : Fabrication New Rail & Accessories, Modification of Gantry Elements.

| DUBAI SPECIAL GANTRY |



COMPLETED PROJECT PHOTOS



Stressing Gondola , At Site



MPI Test on Pier Bracket & Internal Strut.



Internal Strut

STEEL STRUCTURE FOR S.K.L

Project : Subang Kelana Link
 Client : **VSL Engineers (M) Sdn. Bhd.**
 Scope of work : Fabrication Steel Structure such as Stressing Gondola, Working Platform, Pier Bracket, Internal Strut.



Stressing Gondola



Pier Bracket



Portable Stair



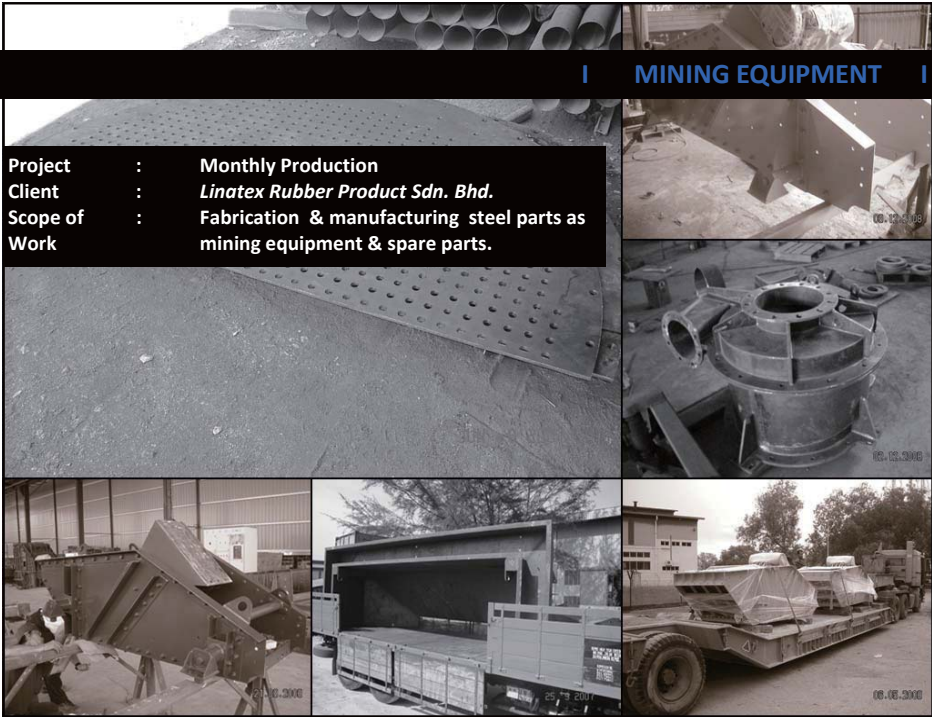
Loading At Our Storage Yard.



COMPLETED PROJECT PHOTOS

MINING EQUIPMENT

Project : Monthly Production
 Client : Linatex Rubber Product Sdn. Bhd.
 Scope of Work : Fabrication & manufacturing steel parts as mining equipment & spare parts.



Vibration screen—various sizes.



Genesis Cyclone—various sizes.



Classifier



Split Sump



COMPLETED PROJECT PHOTOS



Mobile Crusher Trial Assembly.



Radiator Stacker—15M, 18M and 24M.



MOBILE CRUSHER CHASSIS & RADIAR STACKER

Project : Monthly Production
 Client : Striker Crushing & Screening Sdn. Bhd.
 Scope of work : Fabrication & manufacturing steel parts for Mobile Crusher & Radiar Stacker



Impactor



Recycling Screen.



COMPLETED PROJECT PHOTOS



I PRECAST SEGMENTAL STEEL MOULD I

Project : Flyover Dewan Bandaraya Hang Tuah (DBHT)
 Client : **PROJALMA SDN. BHD.**
 Scope of work : Fabrication precast segment steel mould such as Bulkhead, Wing Form, Inner Core, Trolley, Structure Support and Accessories.



Precast Column Mould



Project : Gerbang Selatan Bersepaduan, Johor
 Client : **PROJALMA SDN. BHD.**
 Scope of work : Fabrication precast segment steel mould such as Bulkhead, Wing Form, Inner Core, Trolley, Structure Support and Accessories.



I PRECAST SEGMENTAL STEEL MOULD I



COMPLETED PROJECT PHOTOS

| LIFTING STRUCTURE | RAIL BEAM | WORKING PLATFORM |



Trolley Frame



Coring Machine Clamp Frame



Lifting Structure



Project : Penang Bridge Replacement Stay
 Client : **FREYSSINET PSC — FREYSSINET APTO JOINT VENTURE**
 Scope of work : Fabrication Lifting Structure, Rail Beam, and Working Platform .



Working Platform
 Install on Bridge Pylon.

COMPLETED PROJECT PHOTOS

I CLIMBING STRUCTURE I

Project : Putrajaya, Challenge Park
 Client : **STRETCHMARK ASIA SDN. BHD.**
 Scope of work : Fabrication and Erection of Climbing Steel Structure.



Completed climbing wall over view.



Trusses fitted to the wall by Chemical Anchor Bolts.

Quality Inspection.

COMPLETED PROJECT PHOTOS

CLIMBING TOWER STEEL STRUCTURE

In house fabrication.

Project : Outward Bound, Lumut, Perak.
 Client : **Stretchmark Asia Sdn. Bhd.**
 Scope of work : Fabrication and Erection of Indoor Climbing Steel structure.



Steel Structure fabrication in progress.



Structure cover with Panel

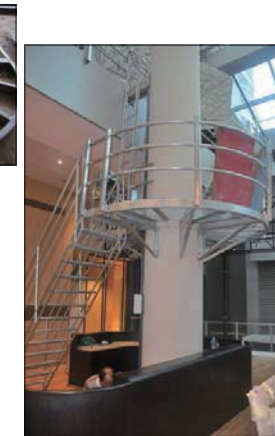


Indoor—site installation



SKATE PARK OBSTACLES—STEEL FRAME WORK

Project : Challenge Park, Putrajaya
 Client : **Stretchmark Asia Sdn. Bhd.**
 Scope of work : Fabrication and delivery Skate Park steel frame work.



Project : Border X, Singapore
 Client : **Stretchmark Asia Sdn. Bhd.**
 Scope of work : Fabrication and delivery Steel Staircase & Platform.

STAIRCASE & PLATFORM

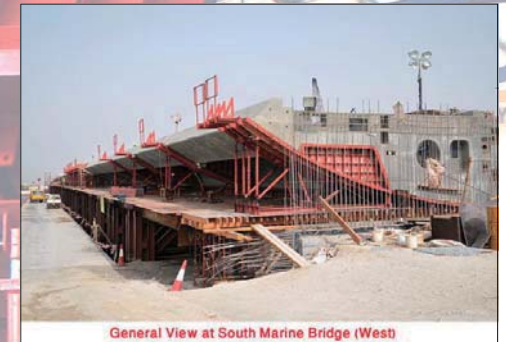
COMPLETED PROJECT PHOTOS



Installation of Formworks at South Marine Bridge (East) (1)



Site installation works in progress.



General View at South Marine Bridge (West)

Project : The Replacement of Sitra Bridge, Bahrain
 Client : **GAMUDA BERHAD (BAHRAIN)**
 Scope of work : Fabrication & delivery Wing Formwork and accessories.

| EXTERNAL FORMWORK |



Fabrication works.



Packing into container.



Trial Assembly at workshop.



COMPLETED PROJECT PHOTOS

UM MOULD | T MOULD | M MOULD | REACTION BEAM |

Project Client: MDC PRECAST INDUSTRIES SDN. BHD.
 Project Location: Kuala Lumpur, Malaysia
 Project Description: Fabrication of steel parts for reaction beam.



Reaction Beam

Project Client: SIM LEISURE CONSULTANTS SDN. BHD.
 Project Location: Kuala Lumpur, Malaysia
 Project Description: Fabrication of steel parts for structure works.

STEEL WORKS & STRUCTURE |



COMPLETED PROJECT PHOTOS

Project : Ikea Handel Ware House
 Client : SINAR SELASEH SDN. BHD.
 Scope of : Supply, fabrication & Erection of Ware House Steel Structure.



Site erection works.



Iron sink gird.



Fabrication In progress.

| STEEL STRUCTURE |



| HEATING TANK | QUENCH TANK | STRUCTURE STEEL |

Project : TIGER CASTING FOUNDRY
 Client : Tiger Casting Solution Sdn. Bhd.
 Scope of work : Fabrication and Installation of Structure Steel, tank and equipment for casting Industrial.



Mezzanine Floor



Quench Tank



Heating Tank with swing door



Holding Tank



Heating Tank with slide door



Swing Arm Grinder

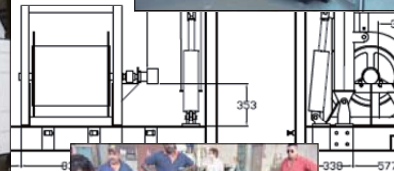


| OFFSHORE CONTROL VAN CONTAINER | CABLE WINCH |

Project : Offshore Equipment
 Client : **Searie Sdn. Bhd.**
 Scope of work : Fabrication and delivery Offshore Equipment



Control Van Container



Hydraulic Boom



Winch



COMPLETED PROJECT PHOTOS



| STEEL PART & EQUIPMENT FOR HIGH ROPE COURSE |

Project : High Rope Course and Play Ground
 Client : **Adventure Rope Sdn. Bhd.**
 Scope of work : Fabrication & delivery Steel Parts.

| STEEL PART & BRACKET FOR ADVENTURE PLAY GROUND |



I 671



Project : Portmann Bridge, Canada
 Client : **Freyssinet Canada Limitee**
 Scope of work : Supply and Fabrication hardware for cable stay bridge.

I 681

| IRD GUIDE TUBE |



Project : Golden Horn Bridge, Russia
 Client : **Freyssinet International & CIE**
 Scope of work : Supply and Fabrication hardware for cable stay bridge.

COMPLETED PROJECT PHOTOS

| STEEL STRUCTURE |



Parts fabrication in progress



Project : BC Place Stadium, Vancouver Canada
 Client : **Freyssinet Canada Limitee**
 Scope of work : Supply & fabrication temporary steel structure for the stadium retractable roof installation.



NDT test in progress



Loading in progress



COMPLETED PROJECT PHOTOS



Site Photos.

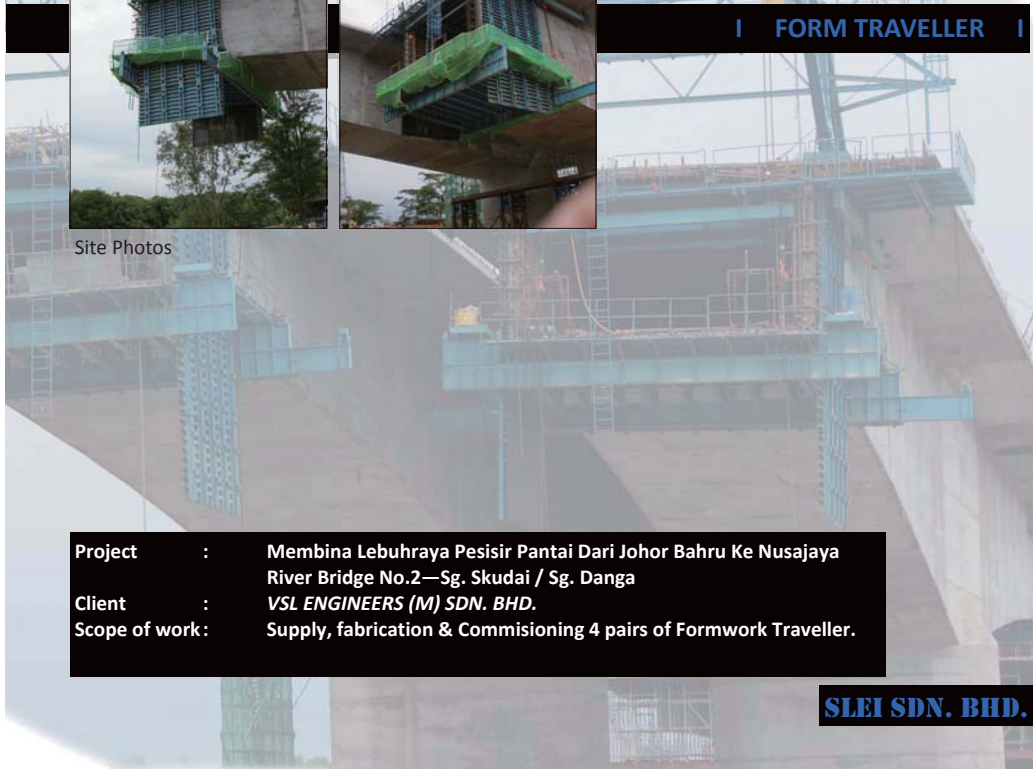


Fabrication in progress.



Site Photos

| FORM TRAVELLER |



Project : Membina Lebuh raya Pesisir Pantai Dari Johor Bahru Ke Nusajaya
 River Bridge No.2—Sg. Skudai / Sg. Danga
 Client : VSL ENGINEERS (M) SDN. BHD.
 Scope of work : Supply, fabrication & Commissioning 4 pairs of Formwork Traveller.

SLEI SDN. BHD.

COMPLETED PROJECT PHOTOS

| STEEL STRUCTURE |



Completion Photos.



Site Installation .



Fabrication in progress



Project : Deauto Industries Ware House.
Client : KAYANGAN KEMAS SDN. BHD.
Scope of work : Supply, fabrication and Installation Steel Structure Building.



COMPLETED PROJECT PHOTOS



PRECAST SEGMENT MOULD

Project : Greenfield Bridge Across The River Ganges, India.
 Client : VSL INDIA PVT. LTD.
 Scope of work : Supply, fabrication & delivery Precast Segment Mould Type Pier.



Trial Assembly.



| STRUCTURE STEEL |

Project : THE CONSOL ENERGY WING TIP BRIDGE, USA
 Client : FREYSSINET INTERNATIONAL & CIE
 Scope of work : Fabrication and trial assembly of Structure Steel for The Consol Energy Wing Tip Bridge.



Site erection complete photos.



Sand Blasting & Painting.



Fabrication In Progress.



Trial assembly in progress.



Packing & Loading.



Machining In Progress.

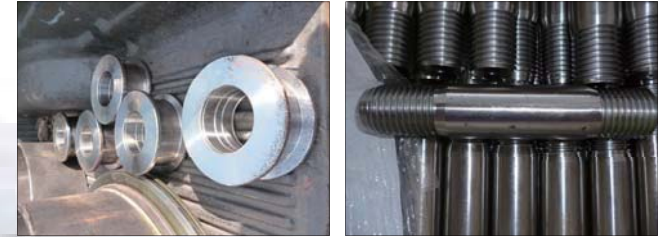
COMPLETED PROJECT PHOTOS



Front Support Sub-Frame Trial Assembly.



Finishing and Packing.

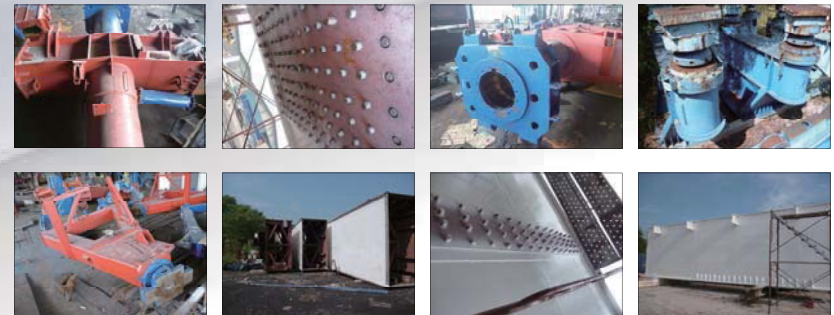


Machining Items.



GANTRY BOX GIRDER

Project : Bridge Along King Faisal Road, Dammam
 Client : **Freyssinet International & CIE**
 Scope of work : Modify and fabrication Gantry Parts.



Modification works and trial assembly all the splice joint.

COMPLETED PROJECT PHOTOS

I LAUNCHING GANTRY I

Project : KLANG VALLEY MRT PROJECT, MALAYSIA
Client : VSL ENGINEERS (M) SDN. BHD.
Scope of work : Supply, fabrication and delivery Launching Gantry (8 sets)



Fabrication in progress.

Machining Items.

COMPLETED PROJECT PHOTOS

I SEGMENTAL BOX GIRDER (SBG) STEEL MOULD I



Fabrication In Progress.



Project : MASS RAPID TRANSIT (MRT) KLANG VALLEY (SG. BULOH ~ KAJANG)
 Client : EASTERN PRETECH (MALAYSIA) SDN. BHD.
 Scope of work : Fabrication , deliver & commissioning 4 sets SBG steel mould include hydraulic system.



Rebar Jig on Site set up.



Inner core arm & hydraulic operation trial test at factory.



Bulkhead shearkey.



Mechanical parts - Turnbuckle



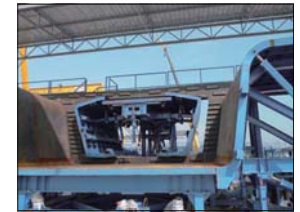
On site set up.



50 tons single acting jack machining in progress.



Inner form & hydraulic operation on Site set up.



COMPLETED PROJECT PHOTOS



Casing pipe for site piling works.



Stud welding on I Girder Beam.



Sand blast & painting In progress.



Fabrication in progress.



STEEL GIRDER BRIDGE

Project : Construction 3 nos of Bridges, Kapit, Sarawak
 Client : **UNTANG JAYA SDN. BHD.**
 Scope of work : Construction & Completion 3 nos of Bridges Along The Proposed Rumah Kuta / Ugap to SK Rantau Panjai Road Project Crossing at Sg. Entajum, Sg. Sebungut & Sg. Plak, Kapit, Sarawak.

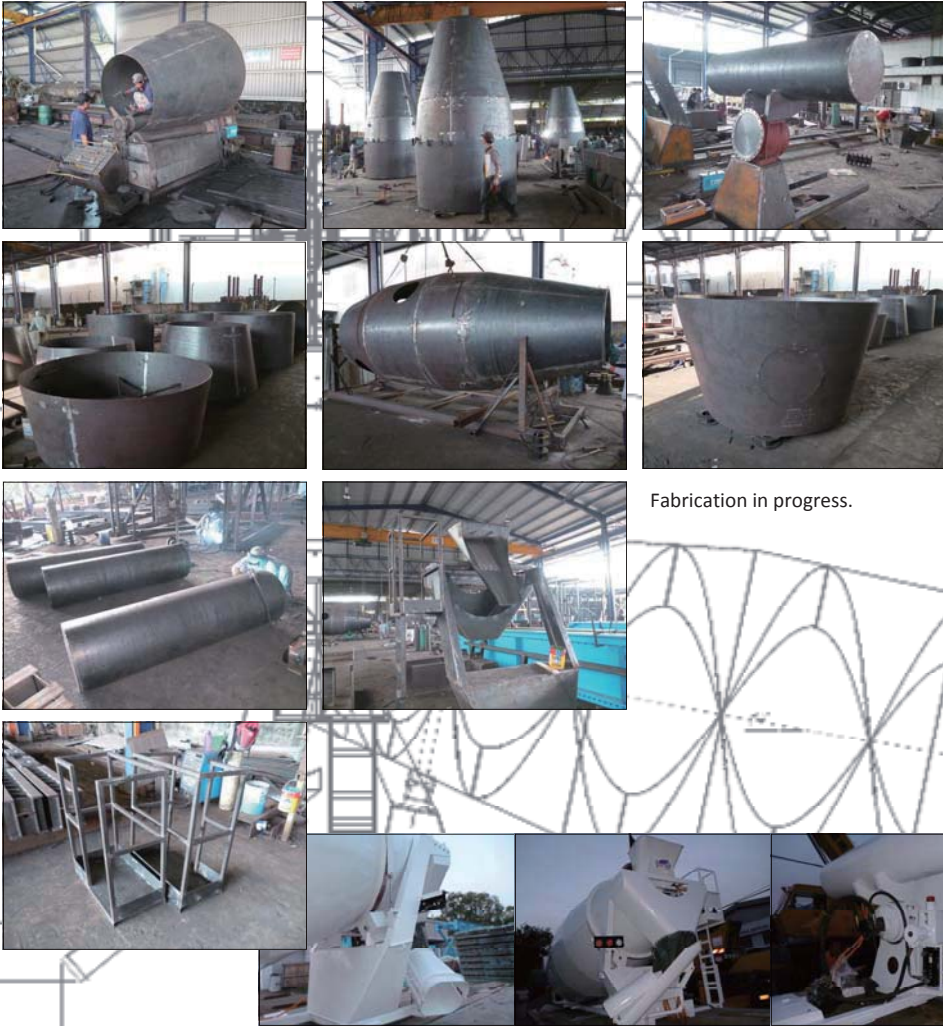
Site installation works



COMPLETED PROJECT PHOTOS

| CONCRETE MIXER |

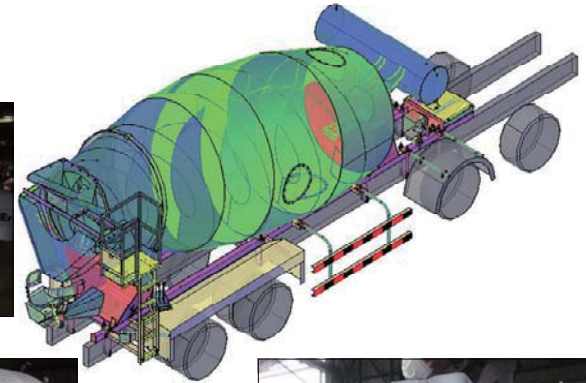
Project : CONCRETE MIXER
 Client : **DEAUTO INDUSTRIES SDN. BHD.**
 Scope of work : Supply, fabrication and delivery 12M³ Concrete Mixer



Fabrication in progress.



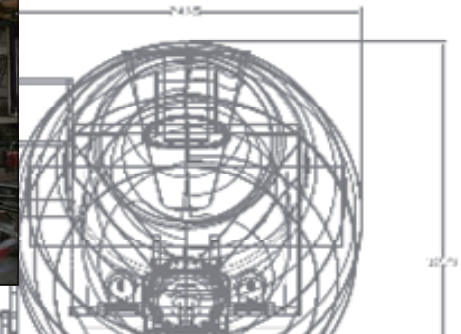
Hydraulic parts installation in progress.



Assembly in progress.



Painting in progress.



Loading on trailer for delivery.

SLEI SDN. BHD.

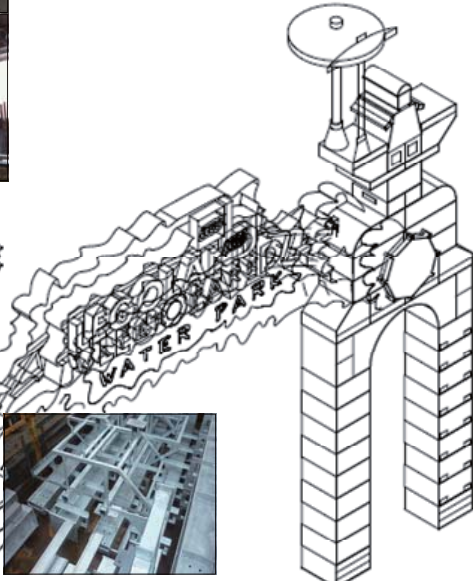
COMPLETED PROJECT PHOTOS

| STEEL STRUCTURE FOR FAÇADE |

Project : LEGOLAND WATER THEMEPARK
 Client : STRIKE THEMING & LEISURE
 Scope of work : Design, fabrication, delivery & installation for the back support structure for façade, entry arch and canopy in Legoland Water Themepark.



Trial Assembly.



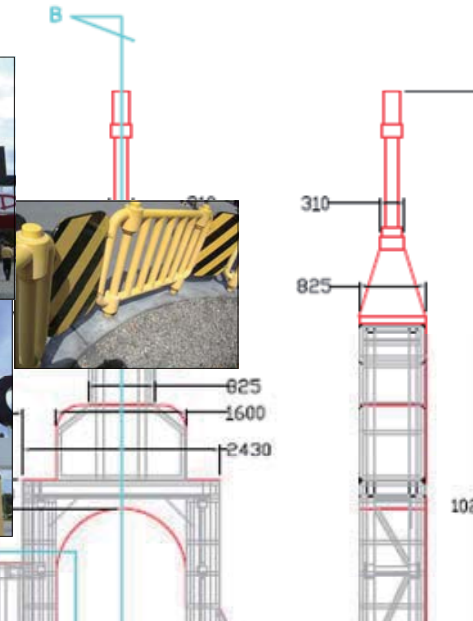
Fabrication works in progress.



Site Installation works.



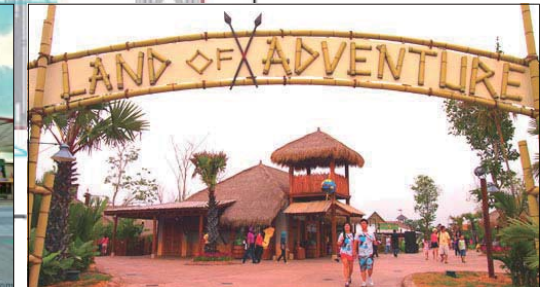
Fabrication in Progress



Project : LEGOLAND THEMEPARK
 Client : SIM LEISURE CONSULTANTS SDN. BHD.
 Scope of work : Design, fabrication, delivery for the back support structure for Plaza Entry Feature in Legoland Themepark.



The Entry Feature of Legoland Malaysia

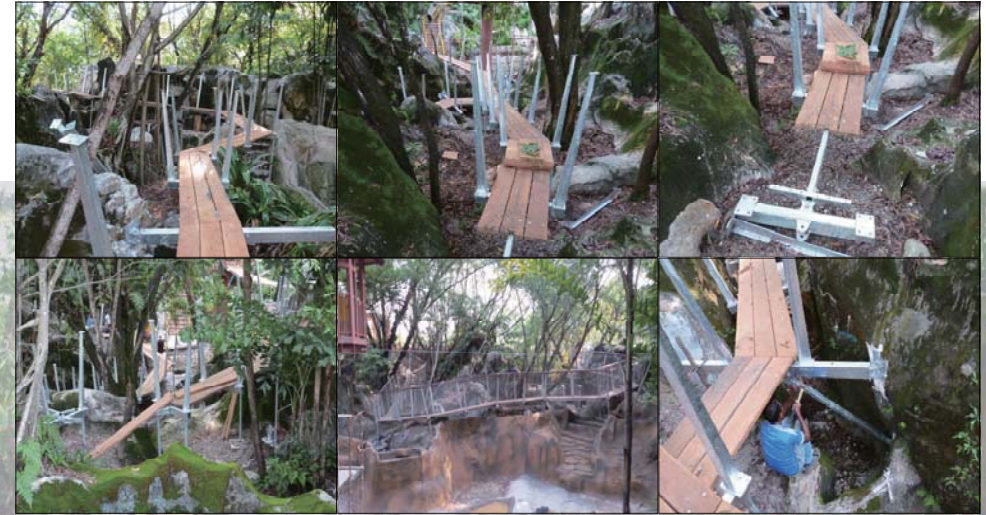


The Entry Feature of Land of Adventure

COMPLETED PROJECT PHOTOS



Project : DESA PARK
 Client : **ADVENTURE ROPE SDN. BHD.**
 Scope of work : Design, fabrication and delivery steel parts for Recreation Park walkway and balustrades.



| RECREATION PARK |

| CANOPY TOUR / CLIFF WALK |



Trial assembly.



Stainless Steel Bracket.

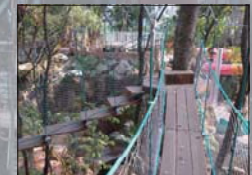


Fabrication in progress.

Project : SUNWAY LAGOON EXTENSION
 Client : **ADVENTURE ROPE SDN. BHD.**
 Scope of work : Design, fabrication and delivery steel parts for walkway and balustrades.



Fabrication in progress.



COMPLETED PROJECT PHOTOS

I MRT STATION COLUMN MOULD I

Project : MRT TUAS WEST EXTENSION, SINGAPORE
 Client : **ENG LEE ENGINEERING PTE. LTD.**
 Scope of work : Supply, fabrication and delivery MRT station column mould.



Taper shape column mould.



Fabrication in progress.

Typical column mould.



I IN-SITU PIER MOULD I

Project : KLANG VALLEY MRT PROJECT V1, MALAYSIA
 Client : **GABUNGAN STRATEGIK SDN. BHD.**
 Scope of work : Supply, fabrication and delivery MD4 pier mould.

COMPLETED PROJECT PHOTOS

I STRUCTURAL STEEL WORK I

Project : Structural Steel Works, Canopy and Metal Cladding Works for Proposed New Warehouse. Kuching, Sarawak.
 Client : **INFOREKA SDN. BHD.**
 Scope of work : Fabrication, delivery and installation steel structure & metal roofing work.



KK3 Main Building.



Project : Klinik Kesehatan 3 (KK3) & Kuarters, Sibujaya, Sibujaya, Sarawak
 Client : **JKR Sarawak**
 Scope of work : Turnkey construction civil structure & building.



I BUILDING CONSTRUCTION I



KK3 5 storeys kuarters.



COMPLETED PROJECT PHOTOS



Project : IOI CITY MALL, DISTRICT 21
 Client : **STRETCHMARKS ASIA SDN. BHD.**
 Scope of work : Design, fabrication and delivery artistic steel work & structure.

| ARTISTIC STEEL WORK |



Bird cage



Fish Cage



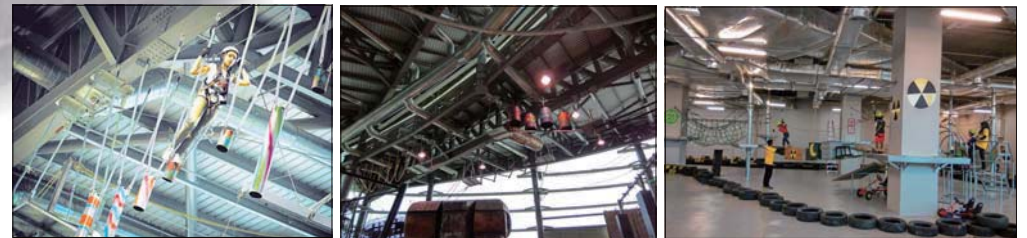
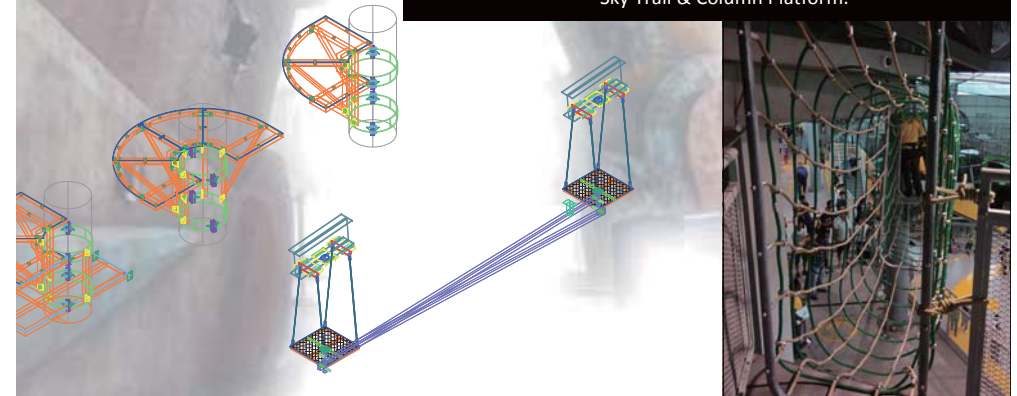
Landing & Support



Fabrication in progress.

Giant Robot support structure.

Project : IOI CITY MALL, DISTRICT 21
 Client : **ADVENTURE ROPE SDN. BHD.**
 Scope of work : Design, fabrication and delivery steel parts for Sky Trail & Column Platform.



Sky Trail & Obstacle.

COMPLETED PROJECT PHOTOS

I PRECAST SEGMENTAL STEEL MOULD I

Project : M41 PEKERJAAN DED RUAS JALAN LAYANG ANTASARI - BLOCK M, INDONESIA
 Client : **PROJALMA SDN. BHD.**
 Scope of work : Supply, fabrication, delivery precast segmental steel mould.



STEEL MOULD TRIAL ASSEMBLY



LEFT / RIGHT TRZ THREAD FOR TURNBUCKLE



STEEL MOULD TRIAL ASSEMBLY



SINGLE ACTING JACK



REBAR JIG TRIAL ASSEMBLY



REBAR JIG TRIAL ASSEMBLY





SLEI SDN. BHD.

No. Plot 83
Jalan Johan 1/2
Kws Perindustrian Pengkalan II
31550 Pusing
Perak Darul Ridzuan
Malaysia

Tel : 605 - 365 4988
605 - 365 4989
Fax : 605 - 365 4990

E-mail : ipoh@slei.com.my
Web : www.slei.com.my